

# XTREME RUBBER TRACK

## 280X101.6X37

### TECHNICAL SPECIFICATIONS

high buoyancy & minimal ground disturbance design



12 month Warranty



MUD



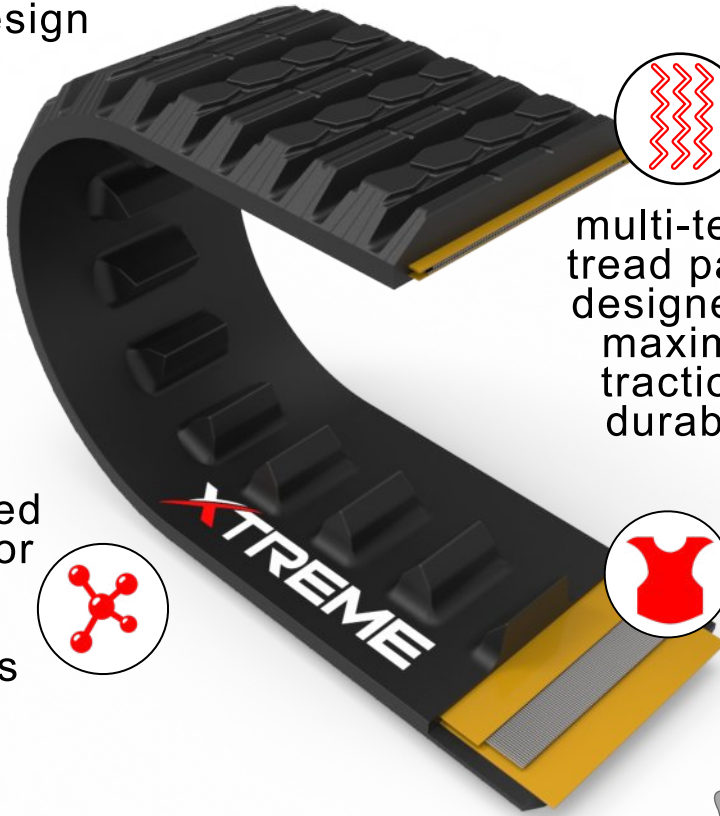
DIRT



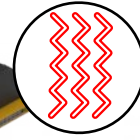
GRASS



PAVEMENT

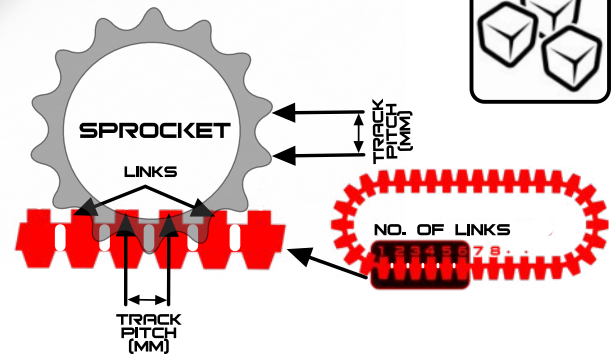
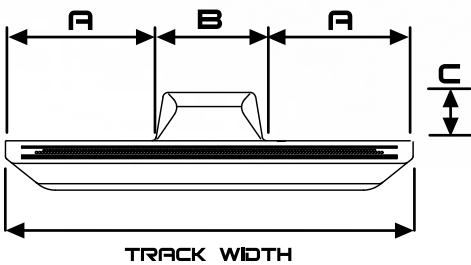


multi-terrain tread pattern designed for maximum traction & durability



kevlar reinforced core

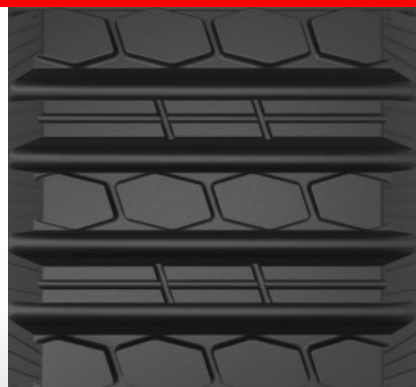
manufactured with superior rubber & adhesive compounds



### ASV ( 1 LUG )

MEASUREMENTS IN MM

TRACK	TRACK PITCH	TRACK WIDTH	TRACK # LINKS	TRACK WEIGHT	A WIDTH	B WIDTH	C HEIGHT
280x101.6x37ASV	101.6	280	37	53 Kg	90	100	46



### MULTI-TERRAIN TRACK